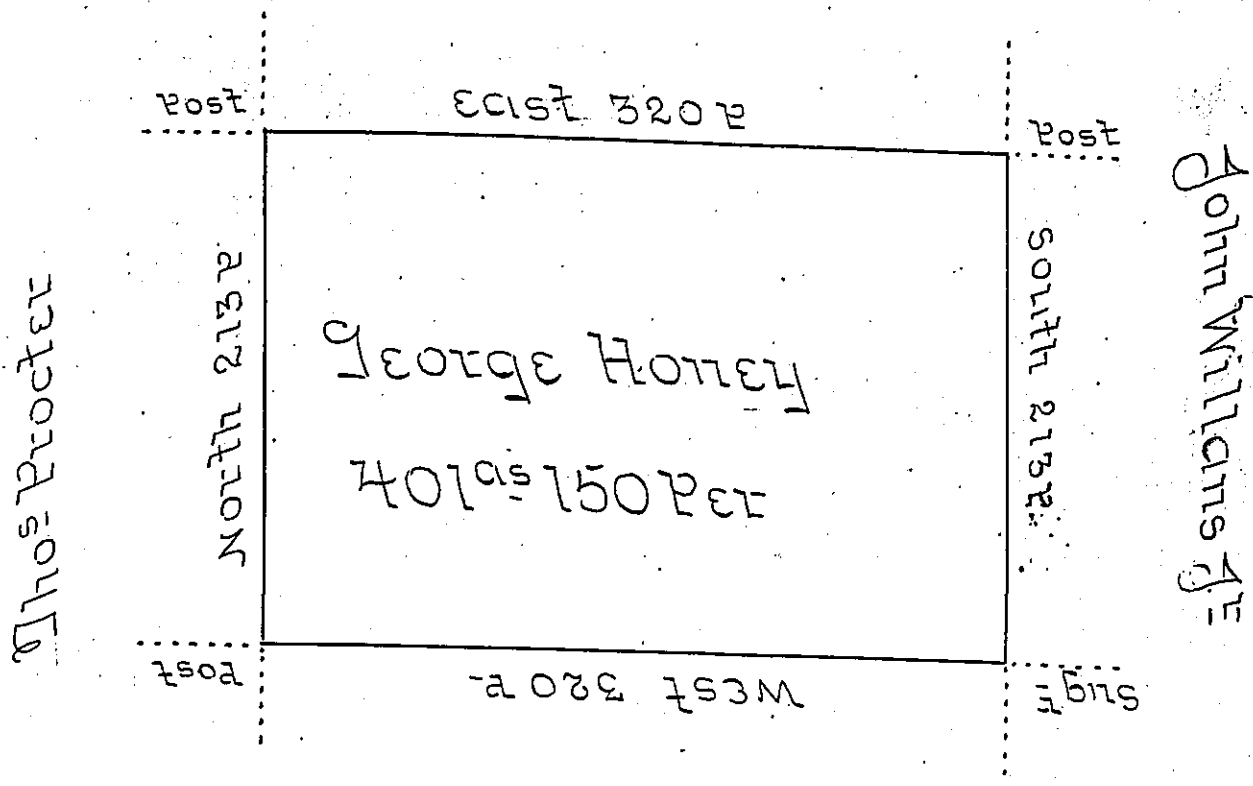


Levi Holinsworth



Samuel Hopkins

Situate on the West side of French Creek in Allegheny County Containing 401 Acres & 150 Perches & Allowance of Six Percent & Surveyed the 11<sup>th</sup> day of May 1795 In Pursuance of a Warrant dated the 30<sup>th</sup> day of May 1792 -

Wm Power DHE

To Genl Brodhead Esq  
 Surveyor General

IN TESTIMONY that the above is a copy of the original remaining on file in the Department of Internal Affairs of Pennsylvania, made conformably to an Act of Assembly approved the 16th day of February, 1833, I have hereunto set my Hand and caused the Seal of said Department to be affixed at Harrisburg, this thirteenth day of March 1905.

*James P. Brown*  
 Secretary of Internal Affairs.